



YOUTH
OUTSIDE

NAAEE

Critical Questions for Program Design During Covid-19

February 25, 2021



I AM ON YOKUT LAND.

WHAT WILL WE DO TO

- AFFIRM INDIGENOUS SOVEREIGNTY
- END THE ERASURE OF INDIGENOUS IDENTITY
- HOLD YOURSELF RESPONSIBLE FOR THE RESPECT OF ANCESTRAL NAMES, LANGUAGES, AND LAWS

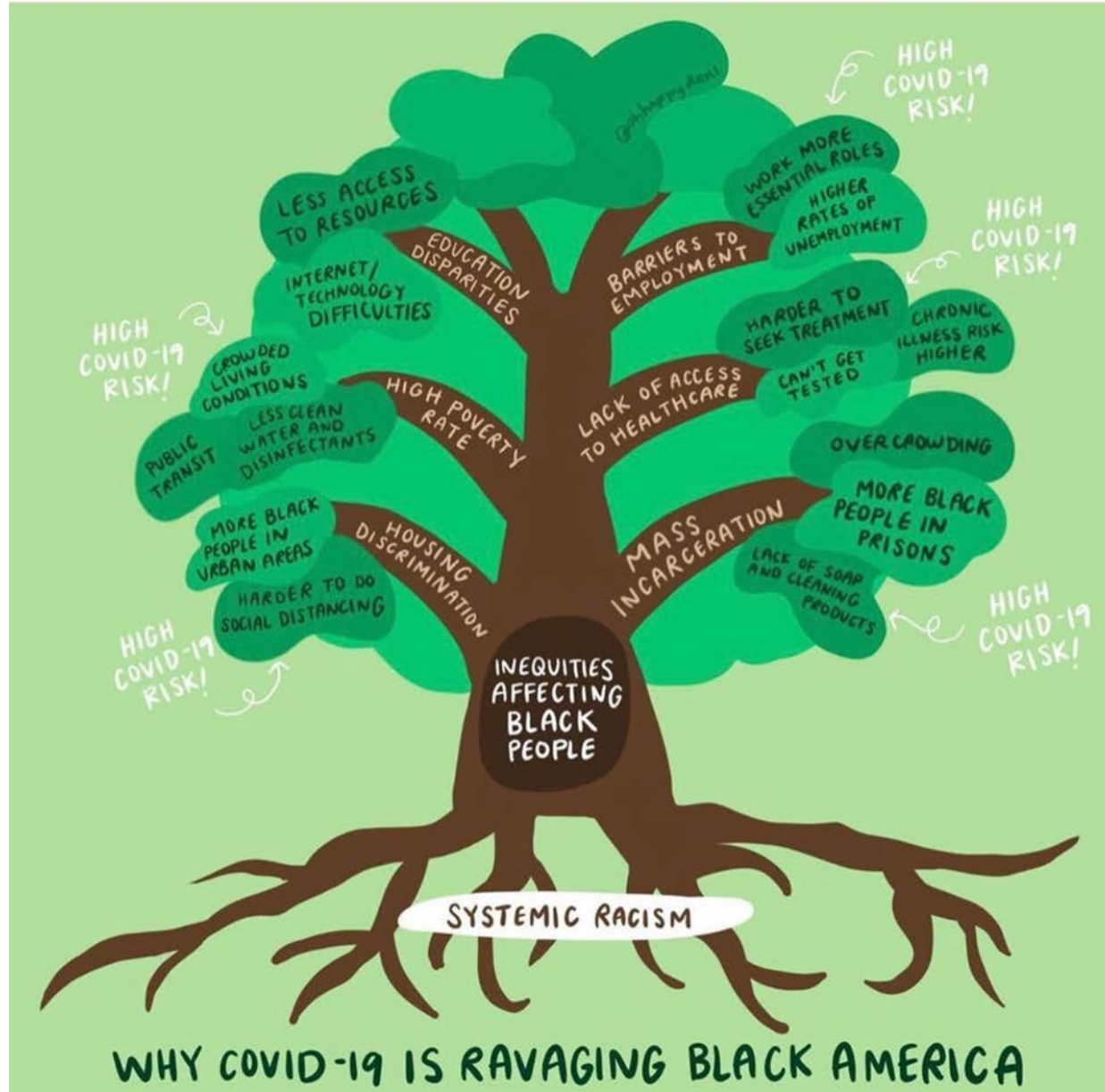


Racial Equity

When someone's race does not determine their access, opportunities, treatment or statistical outcomes in society.

Racial equity requires a proactive and ongoing commitment to anti-racist policies, practices, attitudes, and actions.

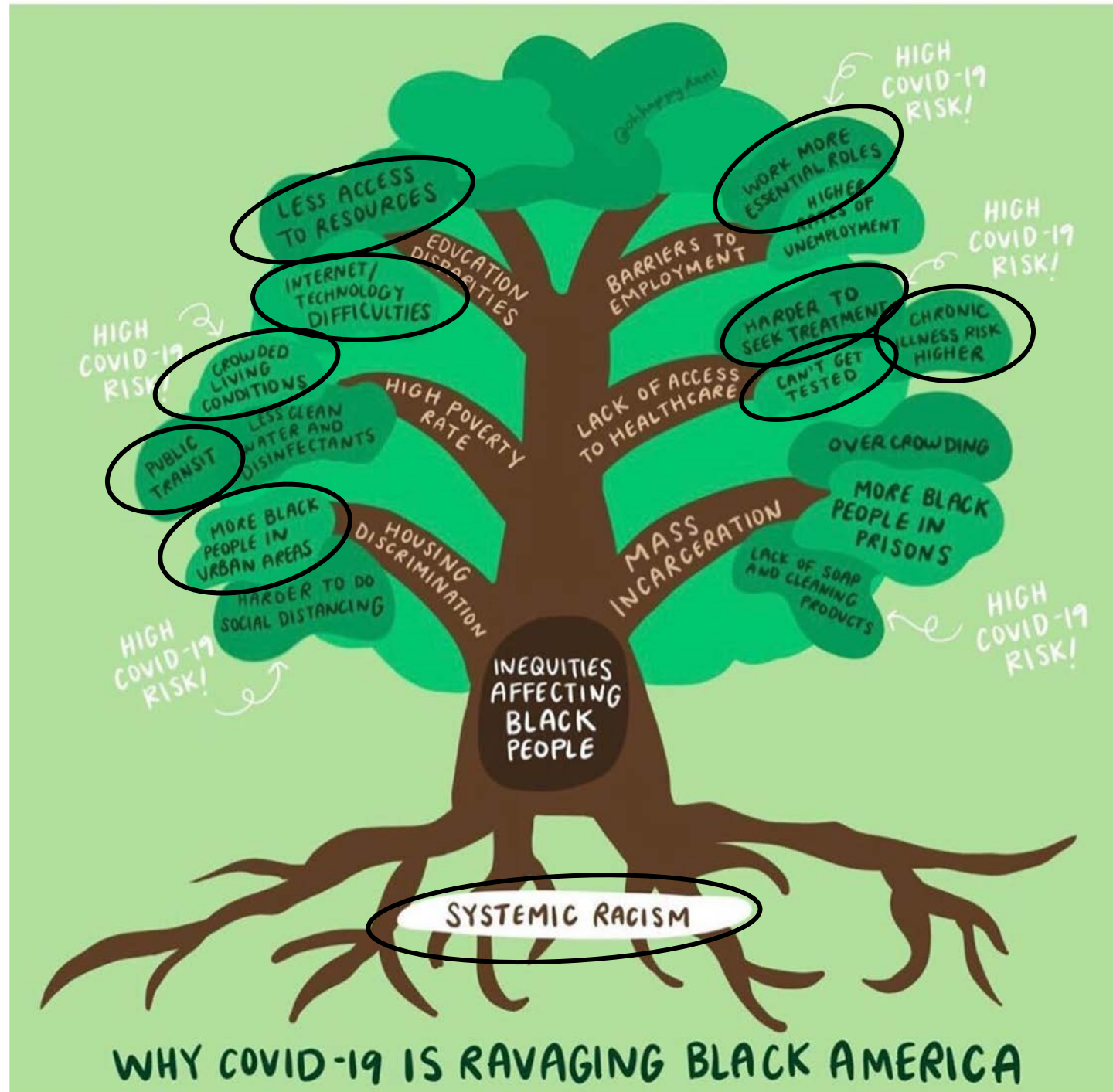
Strive Together





Critical Questions for Equitable and Inclusive Curriculum in the times of Covid.

COVID -19 Considerations	1	Have you considered the impact of inviting yourself and others into young people's homes via video chats (invasion of private life, creation of challenging learning env., compounding feelings of discomfort/shame/embarrassment/resentment)
	2	Have you given multiple opportunities to connect (time and platforms) to accommodate multiple users on limited devices, wifi, and space?
	3	Have you made assumptions about availability of materials that will be needed?
	4	Have you made assumptions about availability to outdoor and park spaces?
	5	Have you made assumptions about the availability of an adult to participate, oversee, or otherwise be available for assistance?
	6	Are you using language that reinforces your assumptions (ex:“You should be able to...”)
	7	Are you giving young people the opportunity to process what is happening in the world?



Activities

What are the activities for the group's visit?	
1.	
2.	
3.	
Are there Risk Management considerations for the activities you have planned that should be revisited and strengthened given the current context of the world?	
Medical Considerations: ←	
Emotional Wellbeing Considerations:	
Logistical Considerations: ←	
Trauma Response:	
Whose voice is reflected in the activities?	Whose voice is missing from the activities?

