



Certified Interpretive Guide Course



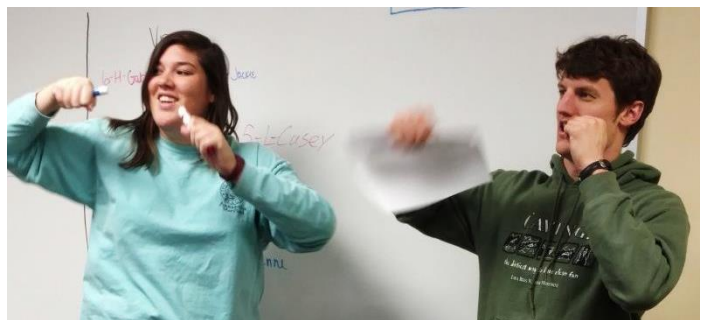
If you work (or would like to work) at tour and cruise companies, parks, zoos, museums, nature centers, aquariums etc. helping visitors connect with our natural or cultural heritage this 32 – hour course is for you! The National Association for Interpretation (NAI) offers a professional certification program to recognize individuals who exhibit knowledge and skills necessary to assure quality interpretive services to all audiences. The goal of the CIG program is to provide consistent, high quality training for staff and volunteers on the basics of presenting interpretive programs. Certification is a way to document that you possess skills and knowledge that allow you to perform effectively in the interpretive profession.

THE CIG PROGRAM

The Certified Interpretive Guide program is designed for anyone who delivers interpretive programs to the public. It combines the theoretical foundations of the profession with practical skills in delivering quality interpretive programming to varied audiences.

This 32-hour workshop offers background and skills including:

- History, definition and principles of interpretation.
- Making your programs purposeful, enjoyable, relevant, organized and thematic.
- Programming emotional and intellectual ideas into your presentations to connect audiences to the resource.
- Tailoring your programs for diverse audiences and various learning styles.
- Presentation and communication skills.
- Interactive group activities, demonstrations and individual sessions with instructor.
- All materials, course workbook and the supplemental text.



COURSE LOCATION: Locust Grove Nature Center
7777 Democracy Blvd Bethesda, MD 20817

DATE & TIME: March 28-31, 2017, 9 am -5:30 pm Daily

QUESTIONS: Parker McMullen Bushman
757-824-5636 ext 107

REGISTER ONLINE:

https://www.interpnet.com/nai/nai_events/Event_Display.aspx?EventKey=CIG032817

REQUIREMENTS FOR THE CIG COURSE

Anyone with a desire to increase their knowledge and skills related to interpretation may participate. The cost of your course registration includes a 1-year NAI membership. You may elect to take the training to become certified or without becoming certified.

WHO SHOULD ATTEND?

- Volunteers and docents who lack experience or education background in the field of interpretation.
- Students or others who are interested in pursuing a career in interpretation
- Contract teachers in natural or cultural history programming
- Newly hired full-time or part-time interpreters, long time interpreters with no formal interpretive training.

WHY BECOME A CIG?

The CIG is an internationally recognized professional certification. Many potential employers and volunteer recruiters actively seek certified interpreters.

WORKSHOP PARTICIPANTS ARE EXPECTED TO

All participants must attend all four days of training. Successful students will complete 32 hours of training, pass a written exam with a minimum score of 80%, and demonstrate use of skills acquired in the training course.

- Attend entire workshop.
- Provide your own lunch.
- Take a 50-question open book literary review.
- Produce a one-page presentation outline.
- Deliver a ten-minute thematic interpretive talk on the last day of the workshop.

SCHEDULE

Sessions begin at 9:00 a.m. and end at 5:30 p.m. each day. Lunch (1/2 hour) and breaks. Participants are encouraged to bring their own lunch and eat in community with their classmates. Weather permitting, come prepared to head outside.

ADDITIONAL INFORMATION

Class size is limited to 15 to ensure individual attention. There are no prerequisites for this training workshop other than a desire to learn new skills for connecting people to your natural and cultural resources.

CIG CORE REVIEW LIBRARY

Each course participant is required to take a 50-question open book literary review. If you wish to purchase your own books, NAI offers a discounted package price CIG certification library package (the package price is less expensive for current NAI members). Visit www.interpnet.com/store/ or call NAI at 888-900-8283, order the "CIG Certification Library" and have the books shipped to you now. Reading the material in advance is recommended, as it is a lot of material to cover and this will free up your evenings and allow you to focus more on class activities. I will provide 2 full sets of books which you may utilize during the course so it is not essential to purchase your own copies of the texts.

THE TEXTS USED ARE:

Interpreting Our Heritage, by Freeman Tilden (4th Edition, U. of North Carolina Press, 2007)

The Gifts of Interpretation, by Larry Beck and Ted Cable (Sagamore Publishing, 2011)

Personal Interpretation: Connecting Your Audience to Heritage Resources, by Lisa Brochu and Tim Merriman (National Association for Interpretation, 2015)

Interpretation: Making a Difference on Purpose, by Sam H. Ham (Fulcrum, 2013)



YOUR TRAINER

Parker is a Certified Interpretive Trainer through the National Association for Interpretation. Parker is available to conduct the Certified Interpretive Guide training at your location, workshop or conference. In her career as an Interpreter, an Environmental Educator, in the Camping Industry and as a Diversity Equity and Inclusion Trainer, Parker has presented sessions and workshops on a variety of subjects.

Parker received her Masters of Science in Environmental Education and Interpretation from the University of Wisconsin – Steven Point. Parker has over 15 years of interpretive experience helping people of all ages connect with the natural world. Born in Bronx, New York, her love of nature developed after a family move from the metropolitan New York area to rural southern Georgia.

Parker has had many experiences participating and working in all aspects of camp life, environmental education and youth programming. She has been a counselor, interpreter, challenge course director and environmental educator. She is currently the Education Director for the Chincoteague Bay Field Station, an Residential Environmental Learning Center located on the Virginian Coast.

COURSE OPTIONS

There are two options for this course.

Option one: Participants can take the 4 day course without obtaining certification. Student will learn interpretive skills and program planning but will not receive the certification as a Certified Interpretive Guide (CIG).

Option two: Participants can take the course and add certification as a Certified Interpretive Guide (CIG). Student will pay an additional fee for certification and must complete an open book Core Literature Review exam. The CIG lasts four years and comes with a complimentary one year membership. If student is already a member of NAI a complimentary membership will be added onto the end of their current membership.

REGISTRATION COSTS FOR INDIVIDUALS

- **CIG Courses w/Certification Fee** - \$380 (includes instructor fee, cert fee, 1 year NAI membership, and workbook)
- **CIG Courses w/out Certification Fee** - \$230 (includes instructor fee and workbook)

HOW TO REGISTER FOR A CIG OR CIH COURSE

1. Go to www.interpnet.com
2. Click on "Sign In" at the top of the page. Sign in to your account.
 - a. If you do not have an account already, please click on "Sign In" and then click on "Create a new account".
 - b. Create a login and password, note it somewhere for your records.
3. To find the webpage for the the course that you would like to register for, either:
 - a. Hover over "Certification & Training". Click on Certification Course Calendar. Click on the link to the class that you would like to register for.
 - b. Or, if you have an email link that was sent to you, copy and paste it into your browser and hit enter.
4. Read the page about the class to get any information that you might need to know about that particular course.
5. At the bottom of the course page, Click on "Register Myself".
 - a. If there are multiple options for registration (for example there is a button for Staff or Basic Registration), click on the one that applies to you. Please do not select staff unless the course instructor has given you prior permission.
6. If you would like to apply to be Certified, click on the blue "Add" button next to "Add CIG (CIH) Certification" box. If you do not want to be certified, but you just want to take the class, you can skip this step. Once you click the "Add" button, a yellow box will show up that says "In Itinerary" next to the "Add CIG (CIH) Certification".
7. Click on "Proceed to Checkout"
8. If you have been given a Promotional Code (not all courses will have a promotional code), please enter it in the "Promotional Code" box and click "Apply". The amount should be taken off of the total cost. The promotional code is case sensitive so please make sure you enter it correctly.
9. Enter your Credit Card information.
 - a. Select which type of card you are using next to "Payment Method".
 - b. Enter your credit card number.
 - c. Type in the name on the card exactly as it is spelled on the credit card you are using.
 - d. Enter the expiration date.
 - e. Enter the 3 digit code from the back of your credit card.
10. Click "Submit Order". A new screen should come up showing that you are registered for the class and you should receive a confirmation email at the address you have on your account.

TO ADD ON CERTIFICATION AFTER YOU HAVE ALREADY REGISTERED FOR A COURSE:

1. Go to www.interpnet.com
2. Click on "Sign In" at the top of the page. Sign in to your account.

3. Find the webpage for the course that you have registered for.
4. At the bottom of the course page, look for the "Add CIG (CIH) Certification" box. Once you click the "Add" button, a yellow box will show up that says "In Itinerary" next to the "Add CIG (CIH) Certification".
5. Click on "Proceed to Checkout"
 - a. If you have registered for \$0 (for students often associated with agencies and universities) you must still proceed to checkout. Then skip steps 6-7 and go to step 8.
6. If you have been given a Promotional Code (not all courses will have a promotional code), please enter it in the "Promotional Code" box and click "Apply". The amount should be taken off of the total cost. The promotional code is case sensitive so please make sure you enter it correctly.
7. Enter your Credit Card information.
 - a. Select which type of card you are using next to "Payment Method".
 - b. Enter your credit card number.
 - c. Type in the name on the card exactly as it is spelled on the credit card you are using.
 - d. Enter the expiration date.
 - e. Enter the 3 digit code from the back of your credit card.
8. Click "Submit Order". A new screen should come up showing that you are registered for certification and you should receive a confirmation email at the address you have on your account.